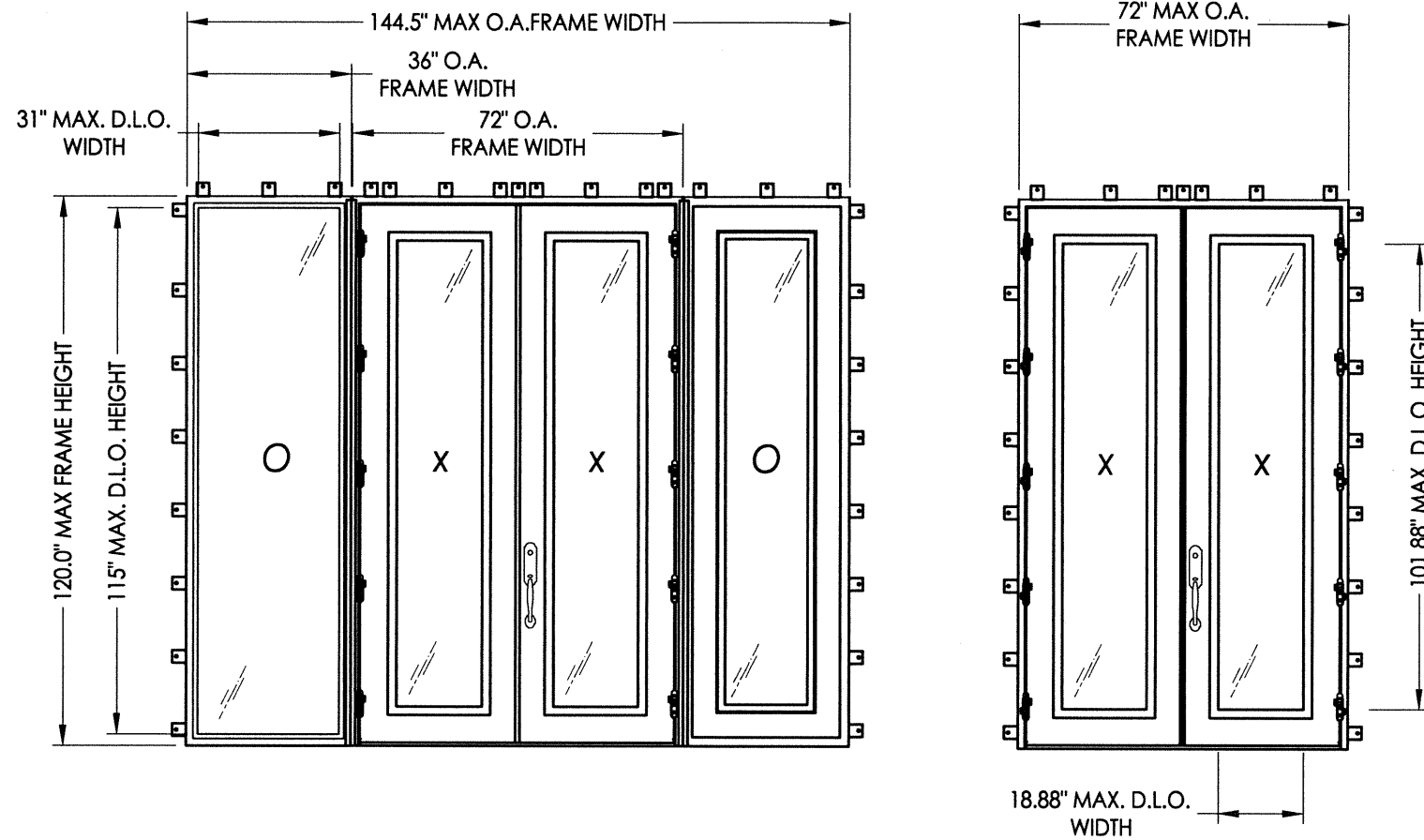


# Clark Hall Iron Doors

## GLAZED IRON DOUBLE DOOR w/ & w/out SIDELITES

### INSWING/OUTSWING "IMPACT"



#### GENERAL NOTES

1. This product has been evaluated and is in compliance with the 2010 Florida Building Code (FBC) structural requirements excluding the "High Velocity Hurricane Zone" (HVHZ).
2. Product anchors shall be as listed and spaced as shown on details. Anchor embedment to base material shall be beyond wall dressing or stucco.
3. When used in areas requiring wind borne debris protection, this product complies with Section 1609.1.2 of the FBC and does not require an impact resistant covering. This product meets missile level "D" and includes Wind Zone 4 as defined in ASTM E1996 and Section 1609.1.2.4 of the FBC.
4. For 2x stud framing construction, anchoring of these units shall be the same as that shown for 2x buck masonry construction.
5. Site conditions that deviate from the details of this drawing require further engineering analysis by a licensed engineer or registered architect.

#### TABLE OF CONTENTS

SHEET#	DESCRIPTION
1	Typical elevations, design pressures, & general notes
2	Door panel details
3	Sidelite panel details
4	Glazing details
5	Elevations
6	Horizontal cross sections
7	Vertical cross sections
8	Buck anchoring
9	Frame anchoring
10	Frame anchoring
11	Components
12	Bill of materials & components

CONFIGURATION	OVERALL FRAME DIMENSION	DESIGN PRESSURE (PSF)			
		INSWING		OUTSWING	
		POS.	NEG.	POS.	NEG.
XX	72.0" x 120.0"	+75.0	-75.0	+75.0	-75.0
OXXO	144.5" x 120.0"	+75.0	-75.0	+75.0	-75.0

NOTE: See Sheets 4 & 5 for glazing and lock hardware design pressure limitations.

Documents Prepared By:

**RW** BUILDING CONSULTANTS, INC.  
P.O. Box 230 Valrico FL 33595  
Phone No.: 813.659.9197

Florida Board of Professional Engineers  
Certificate Of Authorization No. 9813

12.30.13  
Lyndon F. Schmidt, P.E. No. 43409

PRODUCT: CLARK HALL IRON DOORS

PART OR ASSEMBLY:  
TYPICAL ELEVATIONS, DESIGN PRESSURES & GENERAL NOTES

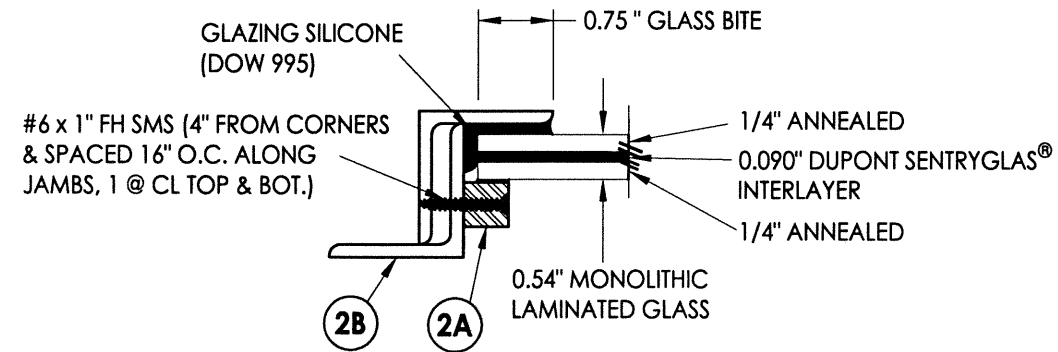
NO.	DATE	BY	REVISIONS

DATE: 10/30/13  
SCALE: N.T.S.  
DWG. BY: JK  
CHK. BY: LFS  
DRAWING NO.: FL-16663.11  
SHEET 1 OF 12

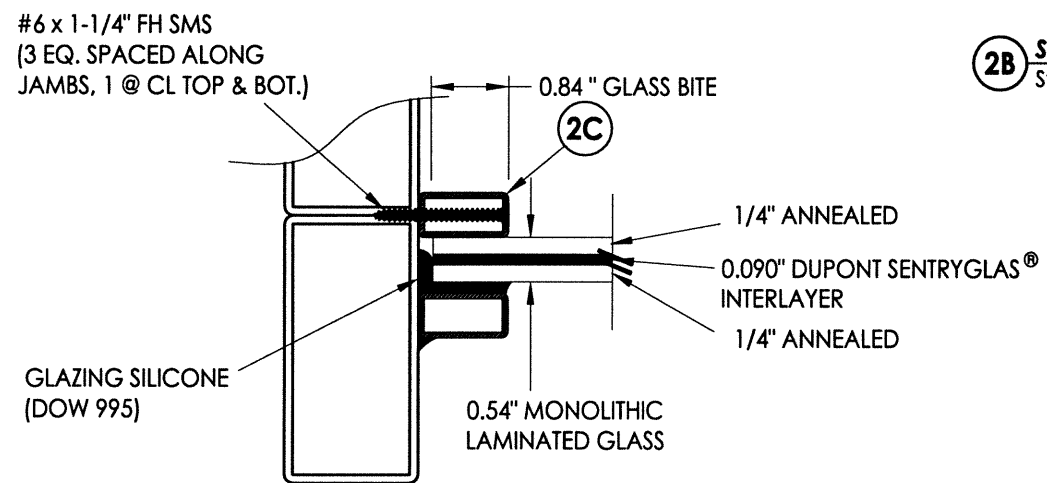
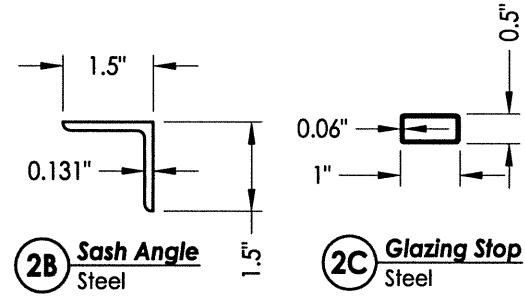
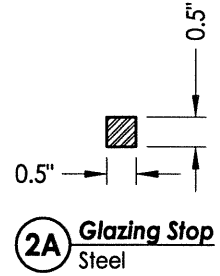




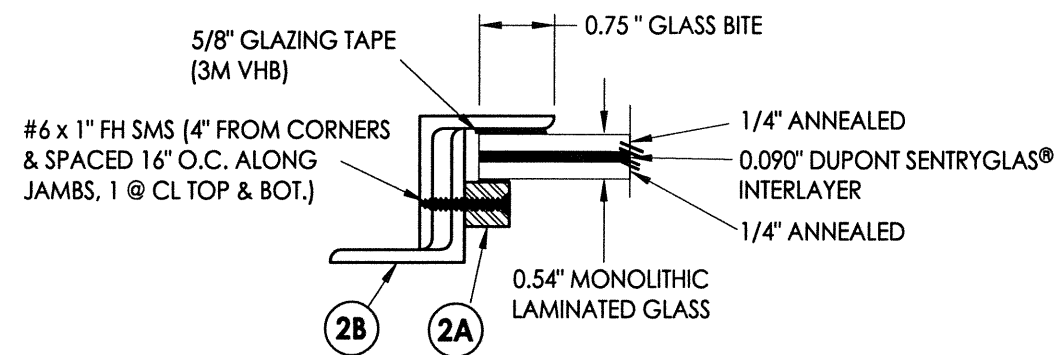
R:\A - Projects\Project Folders\Proj 1701 - 1800\PF 1733\D. RWBC Drawings\FL-16663.10-12.dwg, 4.5



**G1 GLAZING DETAIL**  
Operable Door/Sidelite



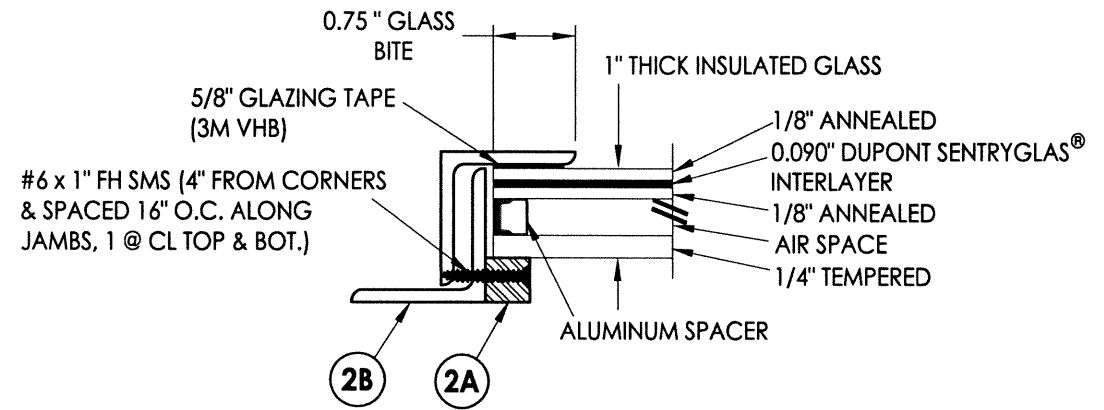
**G1 GLAZING DETAIL**  
Fixed Sidelite/Transom



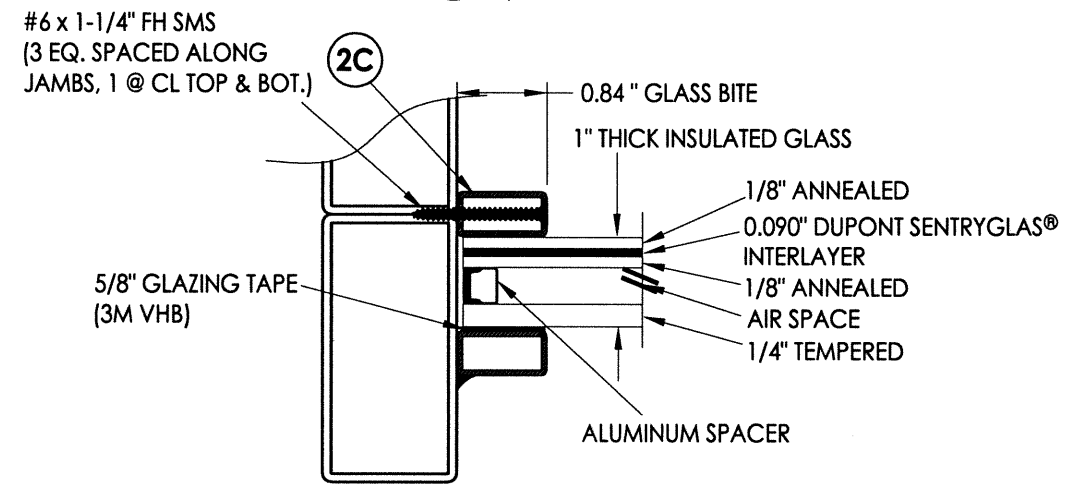
**G3 GLAZING DETAIL**  
Operable Door/Sidelite

**GLAZING DESIGN PRESSURE LIMITATIONS**

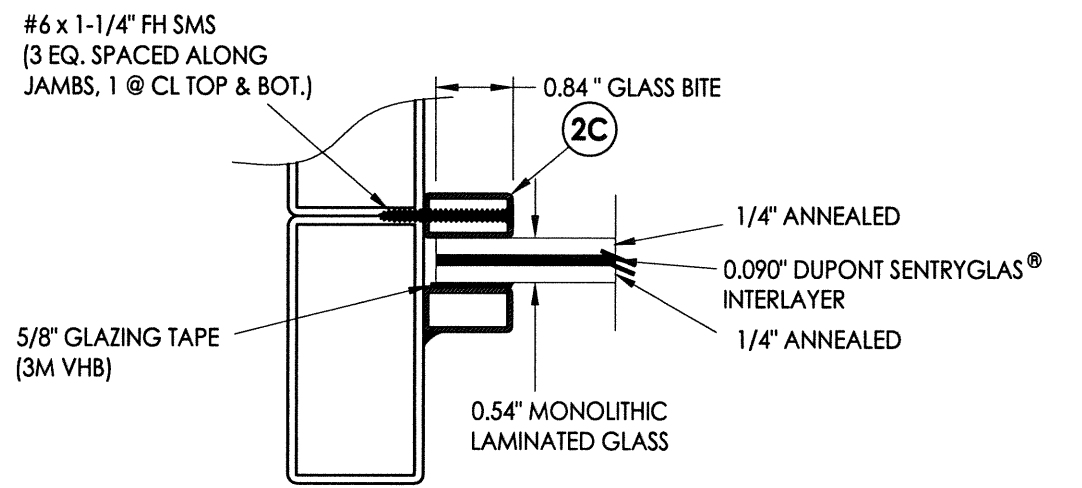
GLAZING	MAX. DESIGN PRESSURE (PSF)	
	POS.	NEG.
G1	+75.0	-75.0
G2, G3	+65.0	-65.0



**G2 GLAZING DETAIL**  
Operable Door/Sidelite



**G2 GLAZING DETAIL**  
Fixed Sidelite/Transom



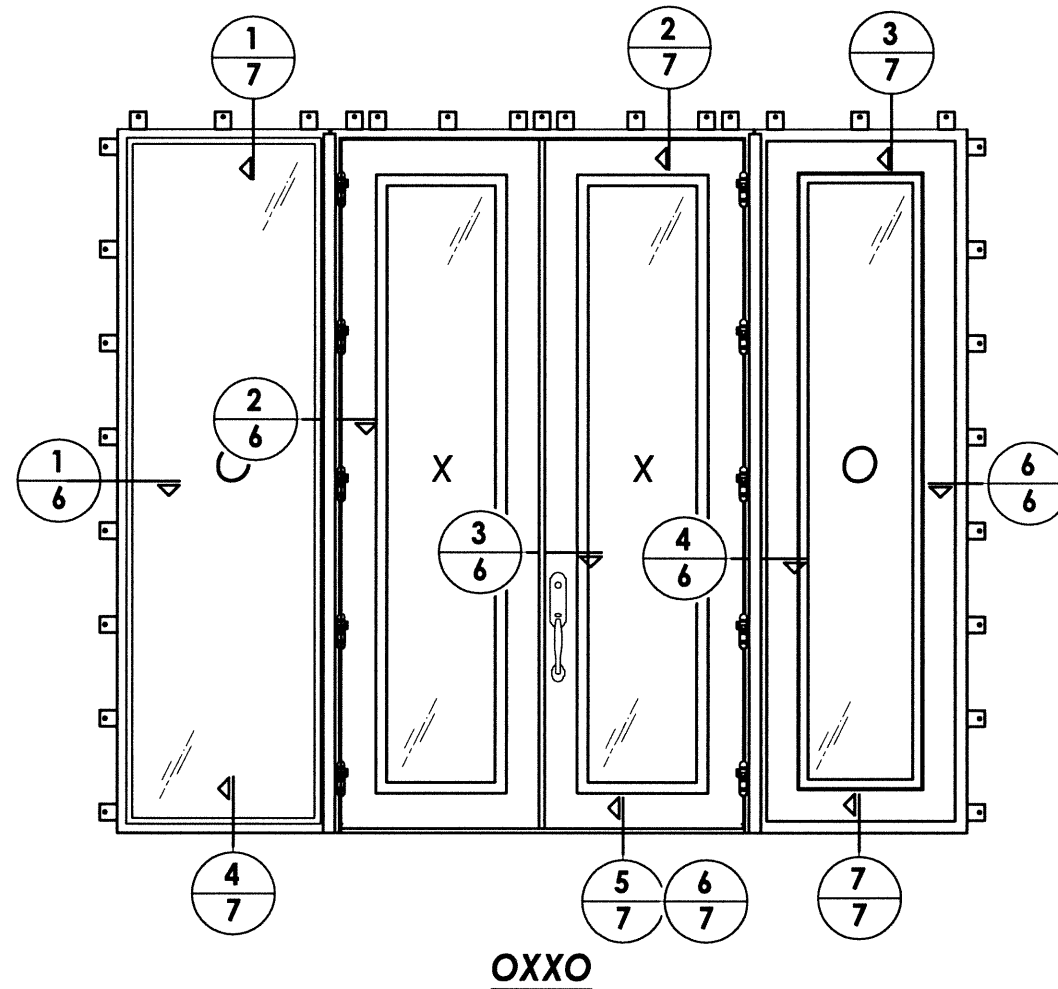
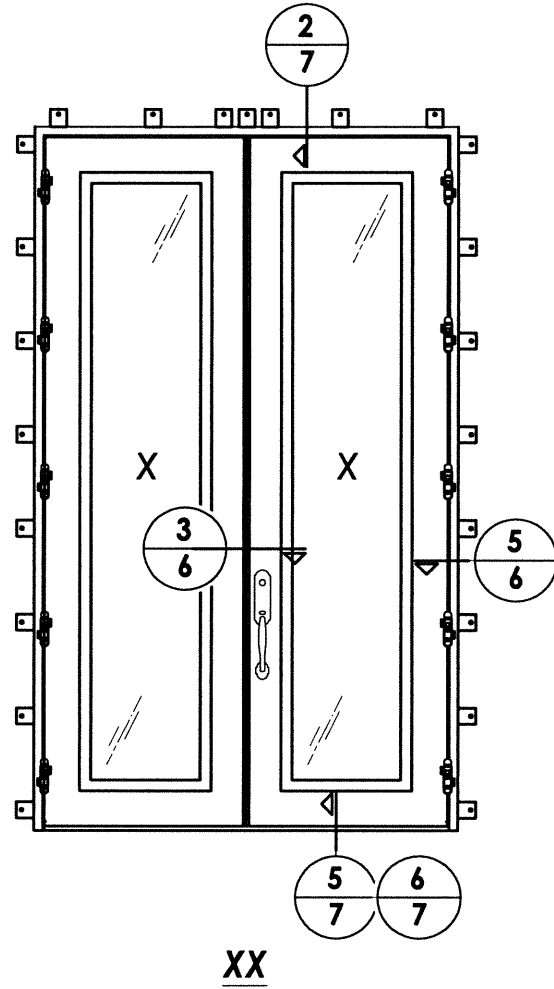
**G3 GLAZING DETAIL**  
Fixed Sidelite/Transom

Documents Prepared By:  
**RW** BUILDING CONSULTANTS, INC.  
 P.O. Box 230 Valrico FL 33595  
 Phone No.: 813.659.9197  
 Florida Board of Professional Engineers  
 Certificate Of Authorization No. 9813  
 Lyndon F. Schmidt, P.E. No. 43409

PRODUCT: CLARK HALL IRON DOORS  
 PART OR ASSEMBLY: GLAZING DETAILS

REVISIONS		NO.	DATE	BY

DATE: 11/8/13  
 SCALE: N.T.S.  
 DWG. BY: JK  
 CHK. BY: LFS  
 DRAWING NO.: FL-16663.11  
 SHEET 4 of 12



**LOCK HARDWARE DESIGN PRESSURE LIMITATIONS**

MANUFACTURER	MODEL	MAX. DESIGN PRESSURE (PSF)	
		POS.	NEG.
EMTEK	TUBULAR ENTRY SET (SHERIDAN - 451812)	+75.0	-75.0
SUN VALLEY BRONZE ACCURATE LOCK & HARDWARE	LEVER/KNOB ENTRY SET (RIDGE: CS-421PLD) MORTISE LOCK	+65.0	-65.0
ASHLEY NORTON	TUBULAR ENTRY SET (SQTUB w/ 900 SERIES KNOB)	+65.0	-65.0
ASHLEY NORTON ACCURATE LOCK & HARDWARE	MORTISE LOCK (SQMOR w/ 900 SERIES KNOB) MORTISE LOCK	+65.0	-65.0

Documents Prepared By:

**RW** BUILDING CONSULTANTS, INC.  
 P.O. Box 230 Vairico FL, 33595  
 Phone No.: 813.659.9197

Florida Board of Professional Engineers  
 Certificate Of Authorization No. 9813

Lyndon F. Schmidt, P.E. No. 43409

*LFS* 12-30-13

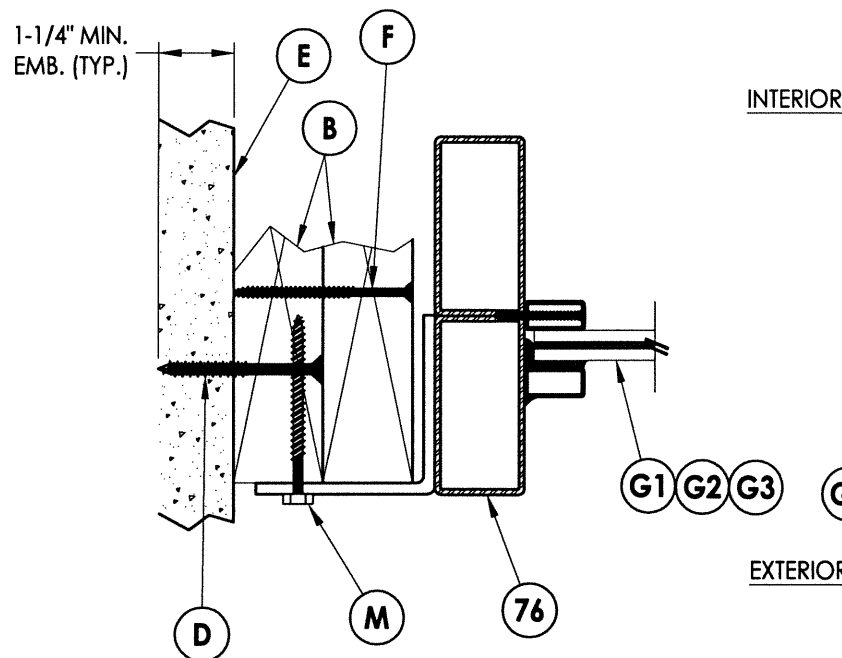
PRODUCT: CLARK HALL IRON DOORS

PART OR ASSEMBLY: ELEVATIONS

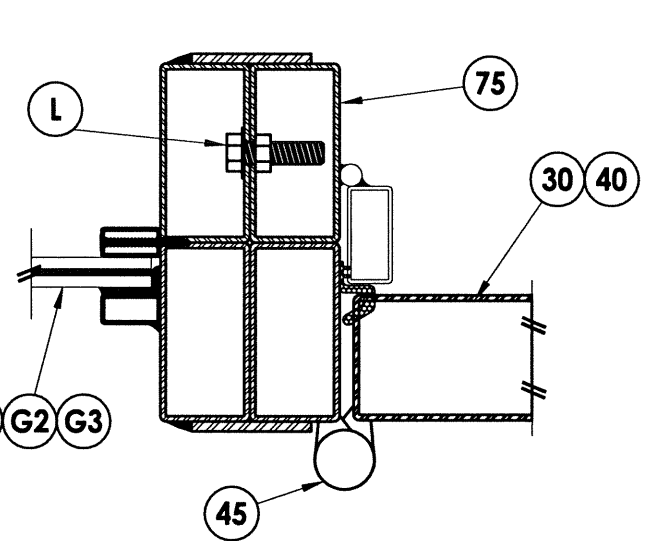
NO.	DATE	BY

DATE: 10/30/13  
 SCALE: N.T.S.  
 DWG. BY: JK  
 CHK. BY: LFS  
 DRAWING NO.: FL-16663.11  
 SHEET 5 OF 12

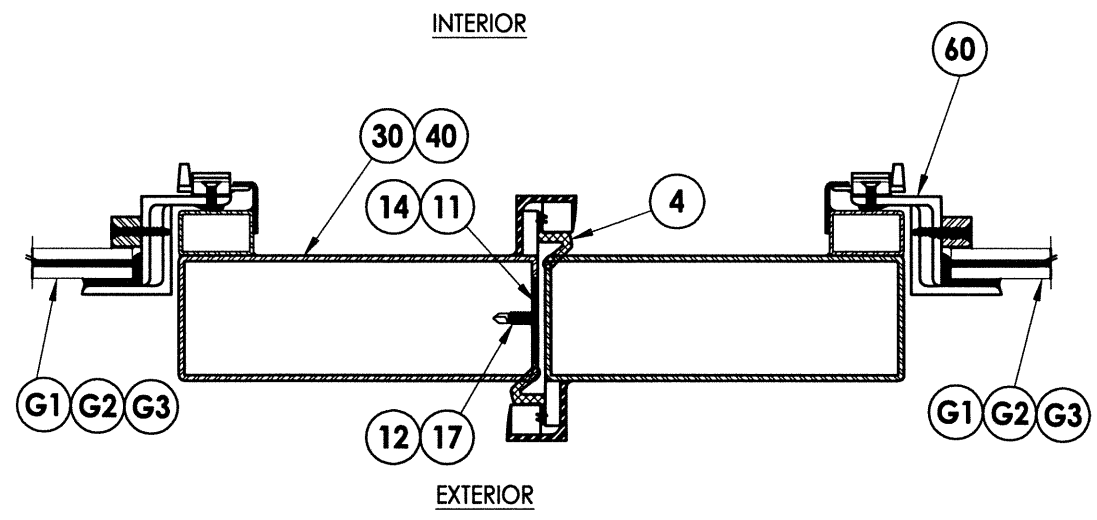
R:\A - Projects\Project Folders\Proj 1701 - 1800\PF 1733D. RWBC Drawings\FL-16663.10-12.dwg, 6.5



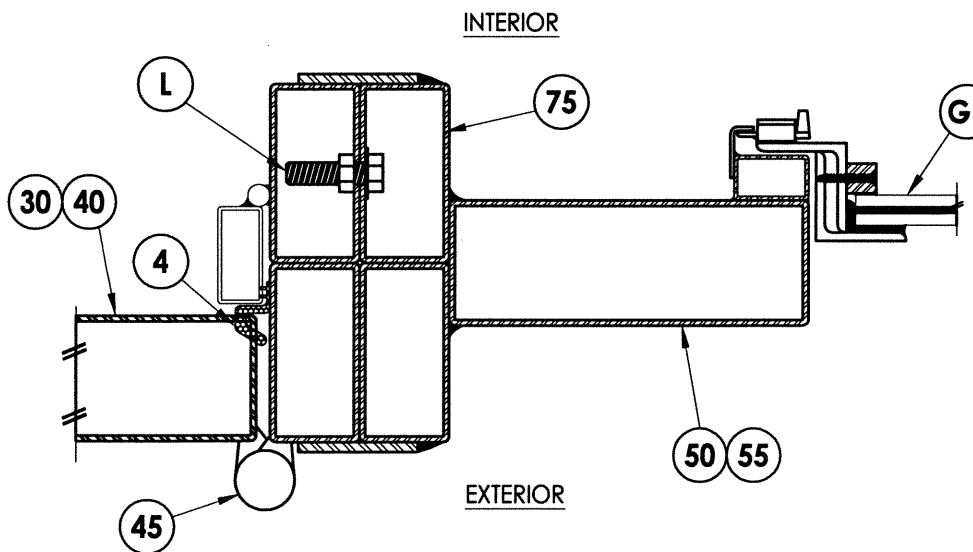
1  
6 HORIZONTAL CROSS SECTION



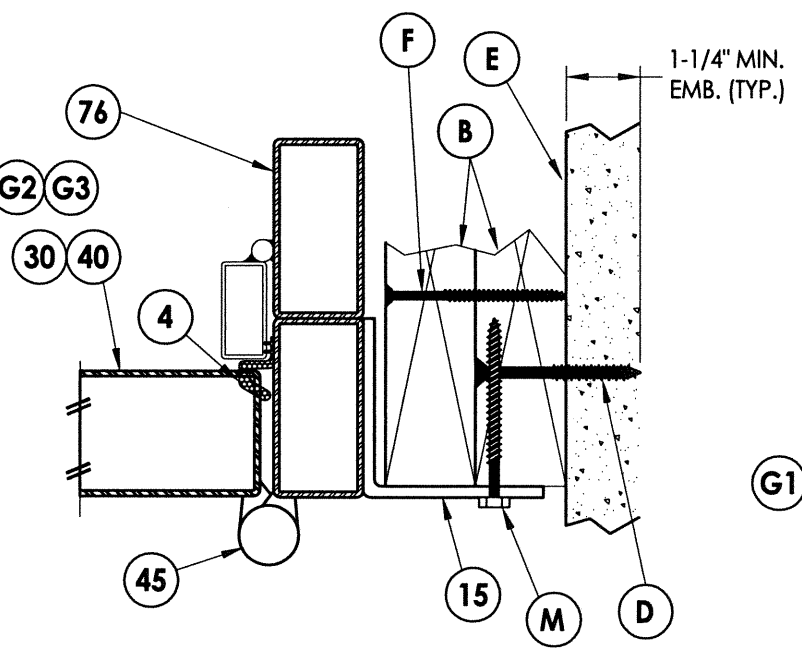
2  
6 HORIZONTAL CROSS SECTION  
Outswing Shown (Inswing Similar)



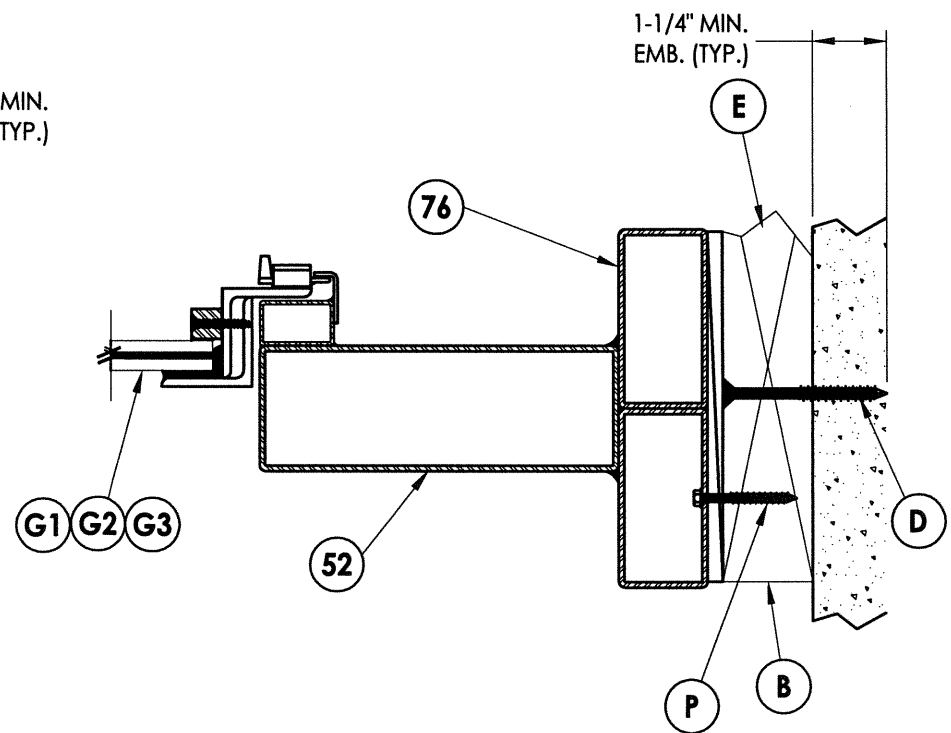
3  
6 HORIZONTAL CROSS SECTION  
Outswing Shown (Inswing Similar)



4  
6 HORIZONTAL CROSS SECTION  
Outswing Shown (Inswing Similar)



5  
6 HORIZONTAL CROSS SECTION  
Outswing Shown (Inswing Similar)



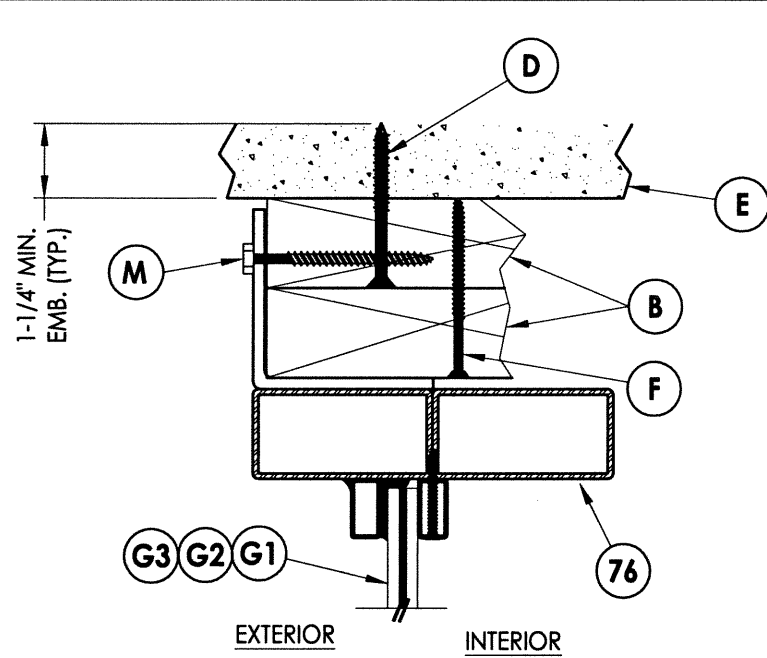
6  
6 HORIZONTAL CROSS SECTION  
Shown w/ Optional Through the Frame Anchoring

Documents Prepared By:  
**RW** BUILDING CONSULTANTS, INC.  
 P.O. Box 230 Valrico FL 33595  
 Phone No.: 813.659.9197  
 Florida Board of Professional Engineers  
 Certificate of Authorization No. 9813  
*LFS* 12-30-13  
 Lyndon F. Schmidt, P.E. No. 43409

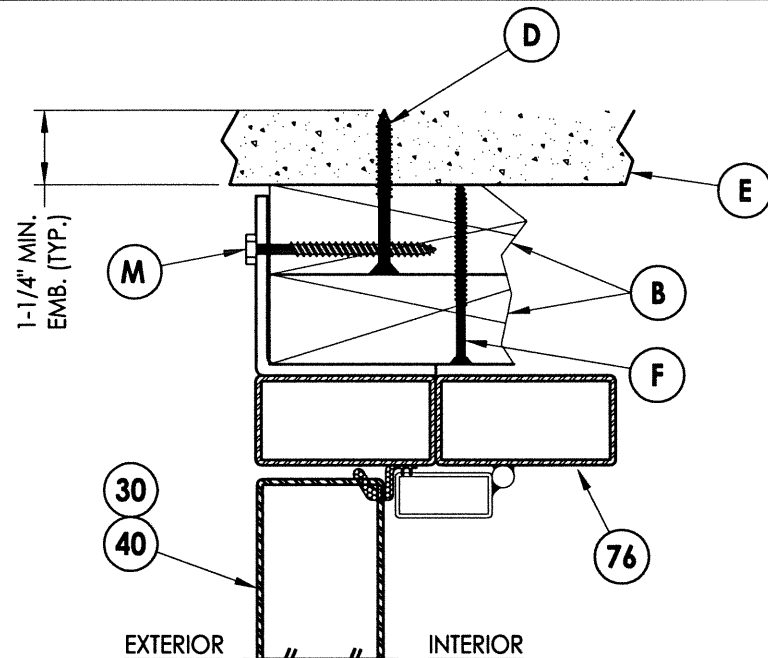
PRODUCT: CLARK HALL IRON DOORS  
 PART OR ASSEMBLY: HORIZONTAL CROSS SECTIONS

NO.	DATE	BY

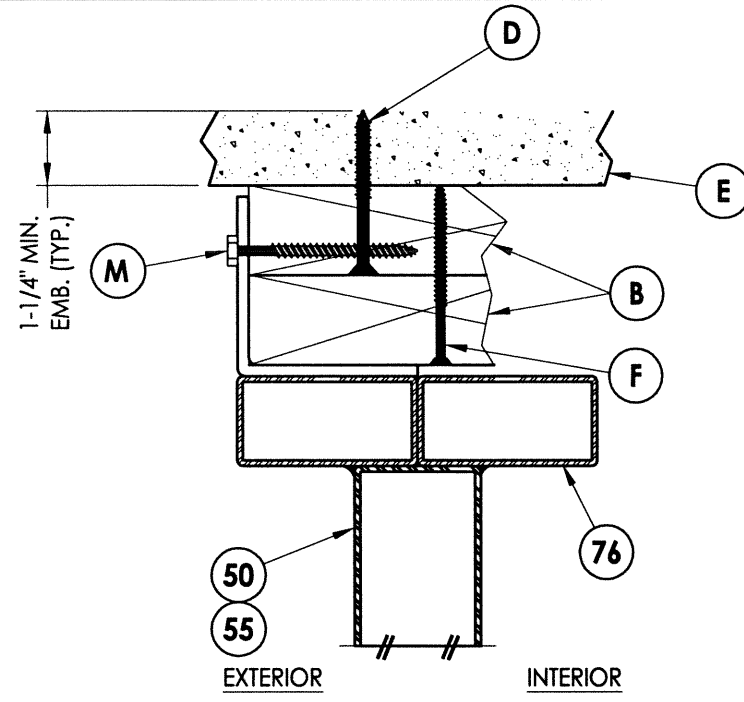
DATE: 10/30/13  
 SCALE: N.T.S.  
 DWG. BY: JK  
 CHK. BY: LFS  
 DRAWING NO.: FL-16663.11  
 SHEET 6 OF 12



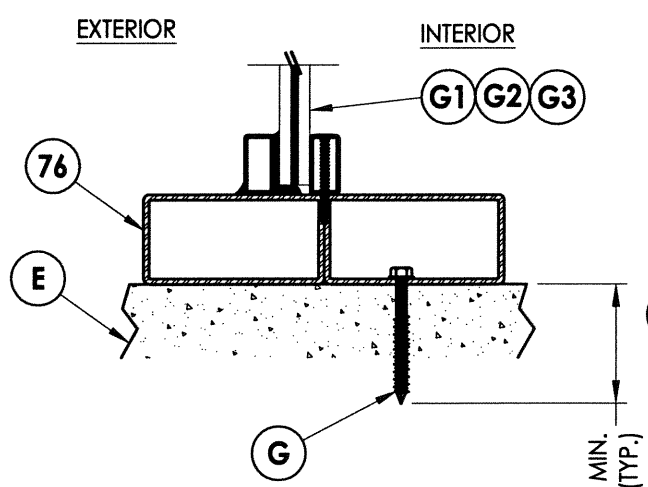
**1** VERTICAL CROSS SECTION  
7 Outswing Shown (Inswing Similar)



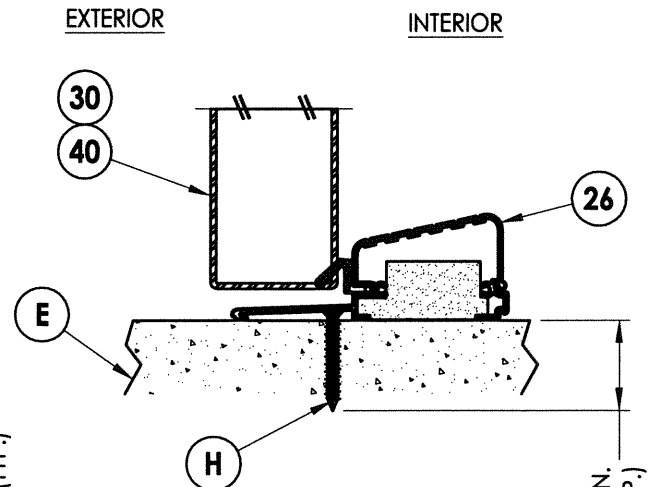
**2** VERTICAL CROSS SECTION  
7 Outswing Shown (Inswing Similar)



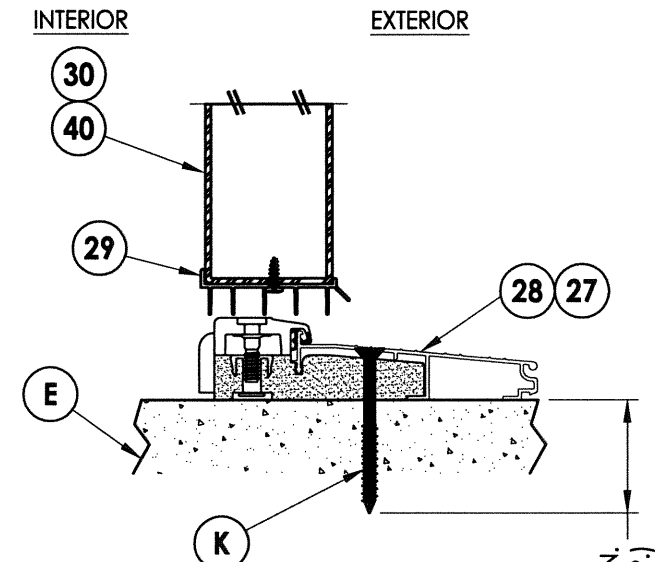
**3** VERTICAL CROSS SECTION  
7 Outswing Shown (Inswing Similar)



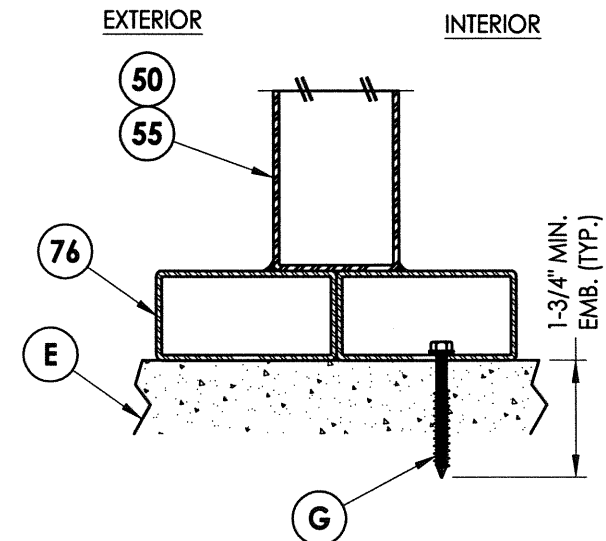
**4** VERTICAL CROSS SECTION  
7 Outswing Shown (Inswing Similar)



**5** VERTICAL CROSS SECTION  
7 Outswing Sill



**6** VERTICAL CROSS SECTION  
7 Inswing Sill



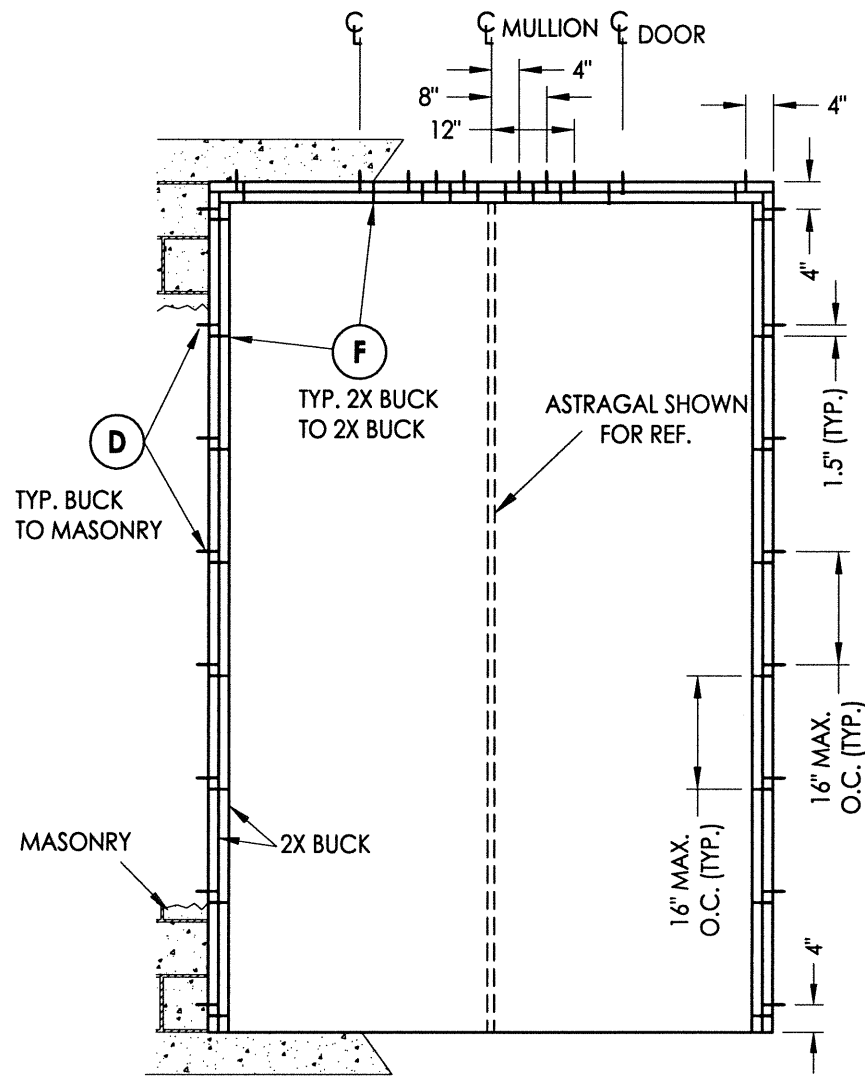
**7** VERTICAL CROSS SECTION  
7 Outswing Shown (Inswing Similar)

Documents Prepared By:  
**RW** BUILDING CONSULTANTS, INC.  
P.O. Box 230 Vairico FL. 33595  
Phone No.: 813.659.9197  
Florida Board of Professional Engineers  
Certificate Of Authorization No. 9813  
*LFS* 12-30-13  
Lyndon F. Schmidt, P.E. No. 43409

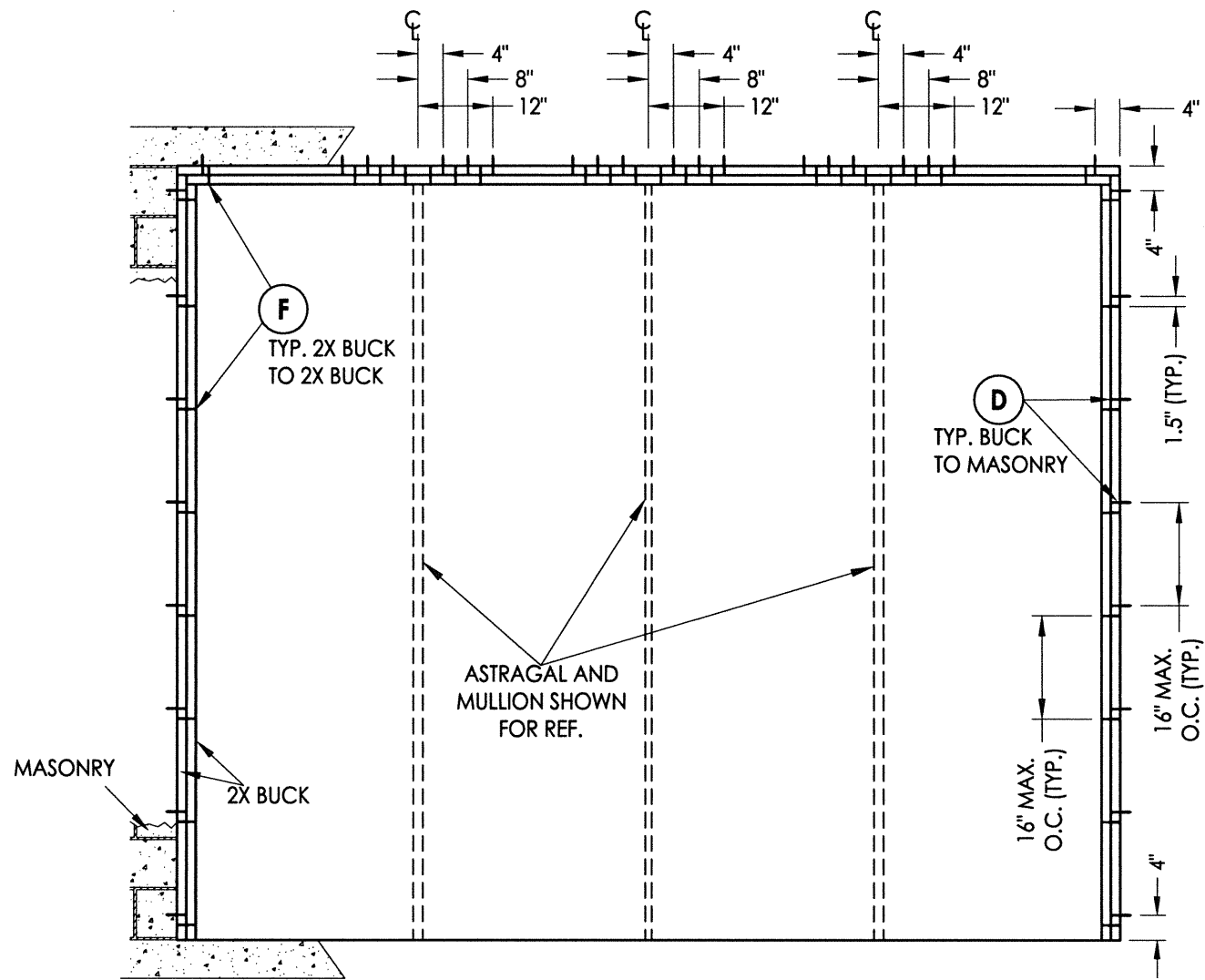
PRODUCT: CLARK HALL IRON DOORS  
PART OR ASSEMBLY: VERTICAL CROSS SECTIONS

NO.	DATE	BY

DATE: 10/30/13  
SCALE: N.T.S.  
DWG. BY: JK  
CHK. BY: LFS  
DRAWING NO.: FL-16663.11  
SHEET 7 OF 12



**BUCK ANCHORING**  
XX



**BUCK ANCHORING**  
OXXO

NOTE FOR THROUGH THE FRAME ANCHORING ONLY  
ONE 2X BUCK IS REQUIRED, ANCHORED AS SHOWN.

**CONCRETE ANCHOR NOTES:**

1. Concrete anchor locations at the corners may be adjusted to maintain the min. edge distance to mortar joints.
2. Concrete anchor locations noted as "MAX. ON CENTER" must be adjusted to maintain the min. edge distance to mortar joints, additional concrete anchors may be required to ensure the "MAX. ON CENTER" dimension are not exceeded.
3. Concrete anchor table:

ANCHOR TYPE	ANCHOR SIZE	MIN. EMBEDMENT	MIN. CLEARANCE TO MASONRY EDGE	MIN. CLEARANCE TO ADJACENT ANCHOR
ITW TAPCON®	1/4"	1-1/4"	2-1/2"	4"
ELCO ULTRACON®	1/4"	1-1/4"	2-1/2"	4"

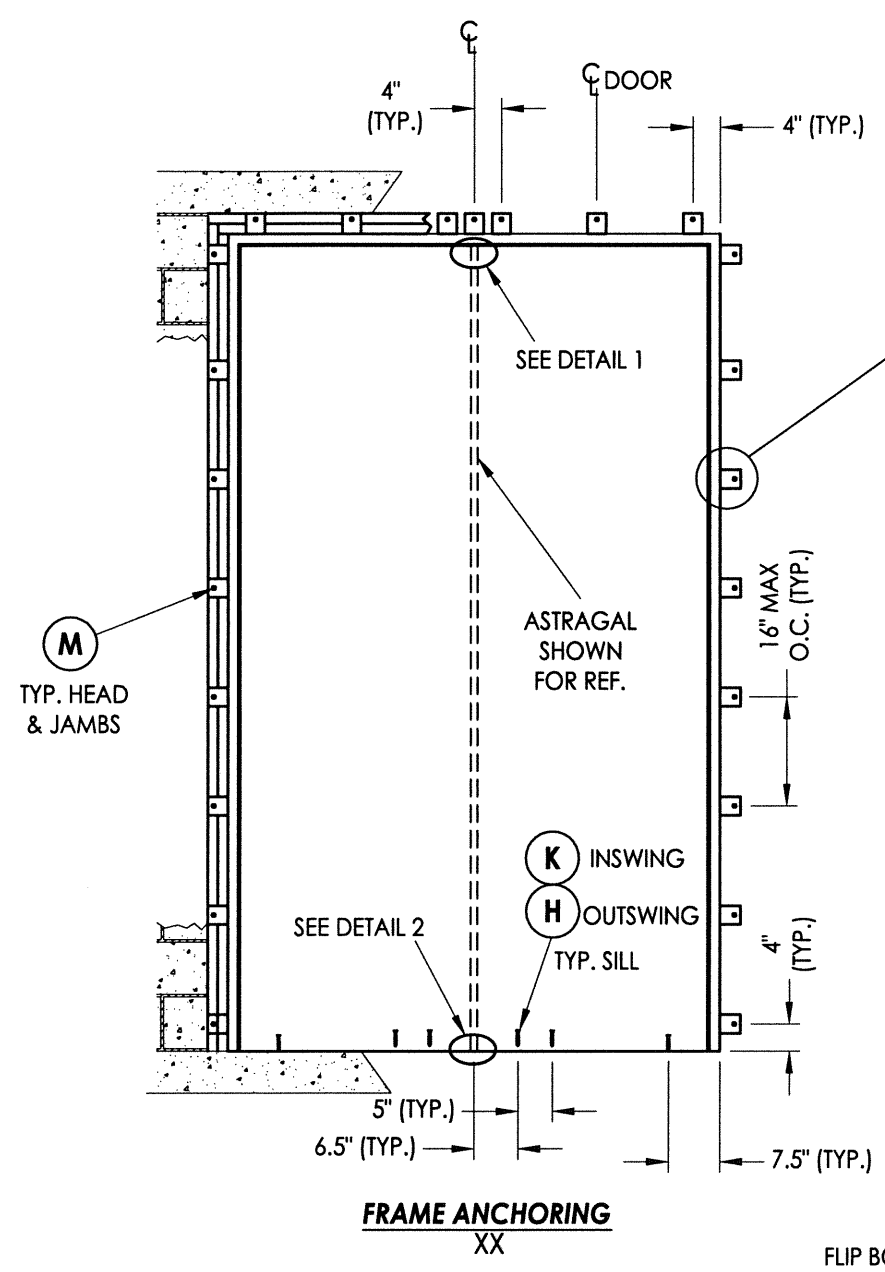
Documents Prepared By:  
**RW** BUILDING CONSULTANTS, INC.  
 P.O. Box 230 Valrico FL 33595  
 Phone No.: 813.659.9197  
 Florida Board of Professional Engineers  
 Certificate Of Authorization No. 9813  
 12.30.13  
 Lyndon F. Schmidt, P.E. No. 43409

PRODUCT: CLARK HALL IRON DOORS  
 PART OR ASSEMBLY: BUCK ANCHORING

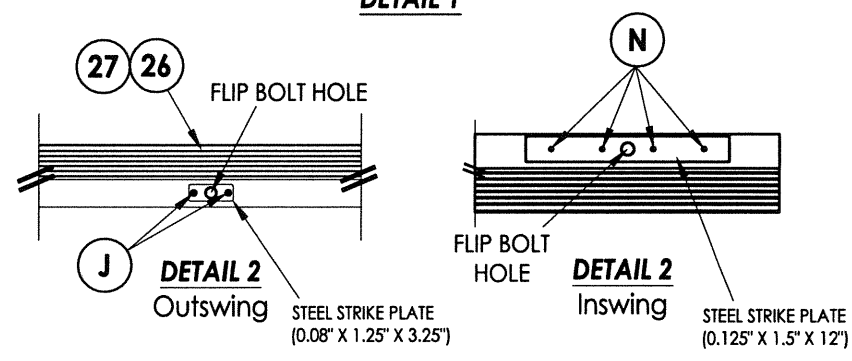
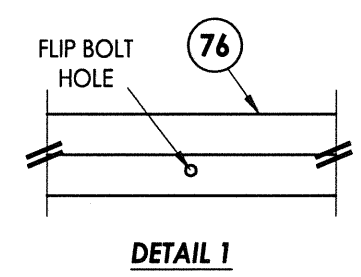
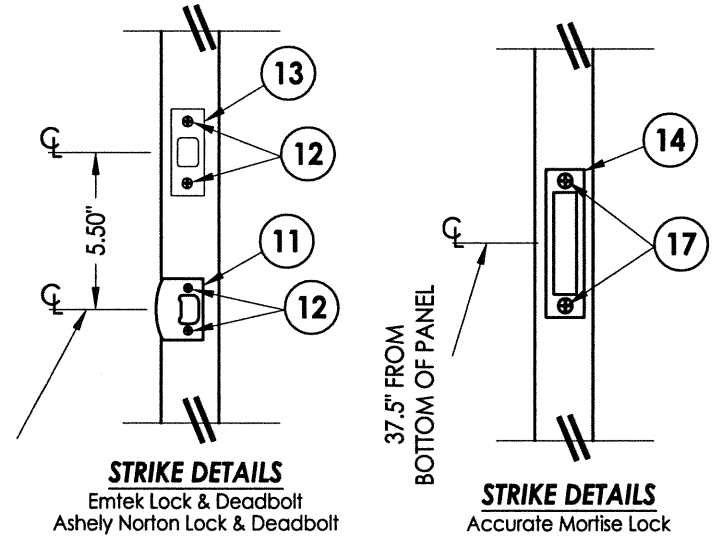
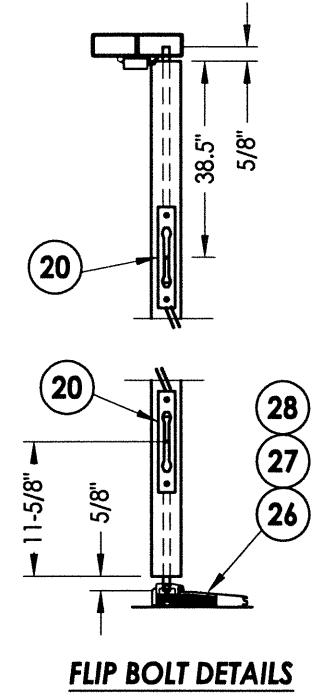
NO.	DATE	BY

DATE: 10/30/13  
 SCALE: N.T.S.  
 DWG. BY: JK  
 CHK. BY: LFS  
 DRAWING NO.: FL-16663.11  
 SHEET 8 OF 12





**ALTERNATE ANCHORING**  
THROUGH THE FRAME  
SUBSTITUTE ANCHOR @ EACH BRACKET



- CONCRETE ANCHOR NOTES:**
- Concrete anchor locations at the corners may be adjusted to maintain the min. edge distance to mortar joints.
  - Concrete anchor locations noted as "MAX. ON CENTER" must be adjusted to maintain the min. edge distance to mortar joints, additional concrete anchors may be required to ensure the "MAX. ON CENTER" dimension are not exceeded.
  - Concrete anchor table:

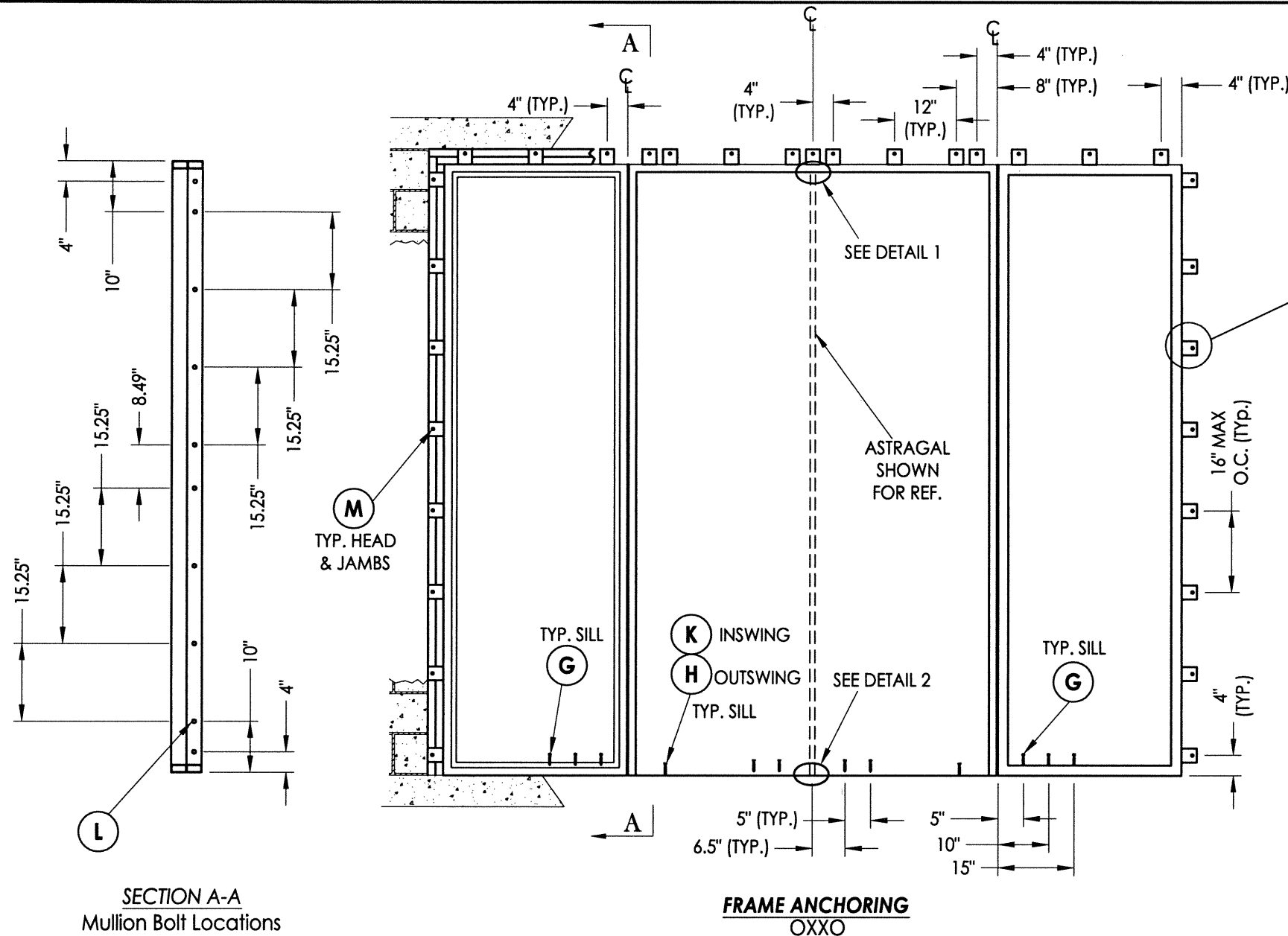
ANCHOR TYPE	ANCHOR SIZE	MIN. EMBEDMENT	MIN. CLEARANCE TO MASONRY EDGE	MIN. CLEARANCE TO ADJACENT ANCHOR
ITW TAPCON®	3/16"	1-1/4"	3"	2-1/2"
	1/4"	1-1/4"	2-1/2"	4"
	5/16" (XL)	1-3/4"	2-1/2"	5"
ELCO ULTRACON®	1/4"	1-1/4"	2-1/2"	4"
	5/16"	1-3/4"	2-1/2"	5"

Documents Prepared By:  
**RW** BUILDING CONSULTANTS, INC.  
 P.O. Box 230 Valrico FL 33595  
 Phone No.: 813.659.9197  
 Florida Board of Professional Engineers  
 Certificate Of Authorization No. 9813  
 17 Feb 12.30.13  
 Lyndon F. Schmidt, P.E. No. 43409

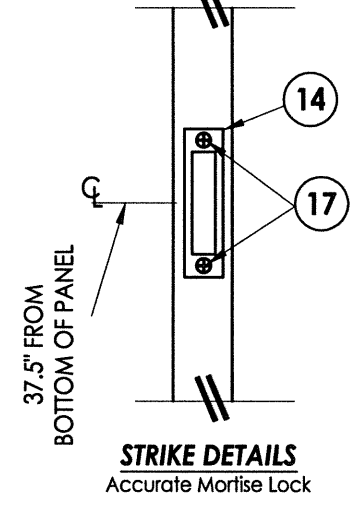
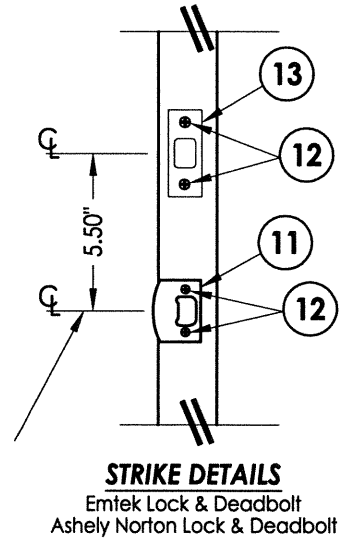
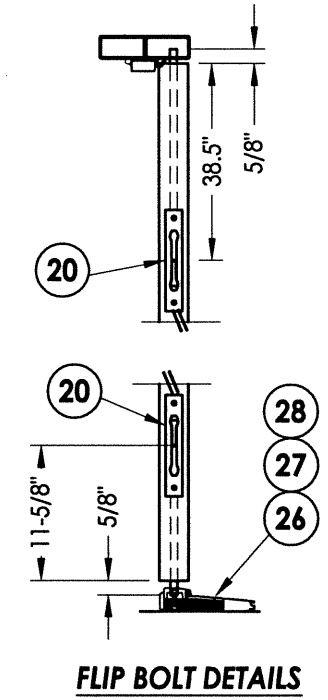
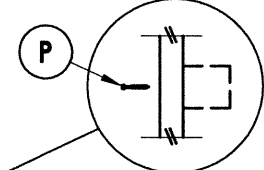
PRODUCT: CLARK HALL IRON DOORS  
 PART OR ASSEMBLY:  
 FRAME ANCHORING

NO.	DATE	BY	REVISIONS

DATE: 10/30/13  
 SCALE: N.T.S.  
 DWG. BY: JK  
 CHK. BY: LFS  
 DRAWING NO.: FL-16663.11  
 SHEET 9 OF 12

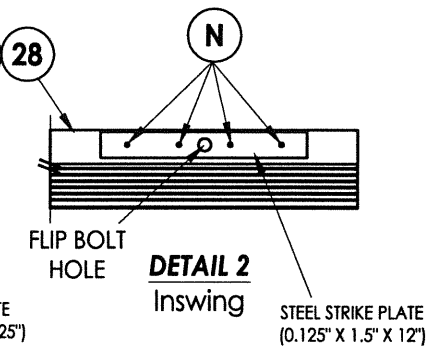
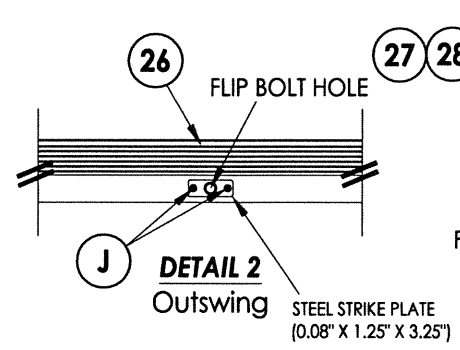
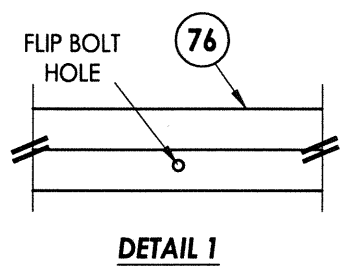


**ALTERNATE ANCHORING**  
THROUGH THE FRAME  
SUBSTITUTE ANCHOR @ EACH BRACKET



- CONCRETE ANCHOR NOTES:**
- Concrete anchor locations at the corners may be adjusted to maintain the min. edge distance to mortar joints.
  - Concrete anchor locations noted as "MAX. ON CENTER" must be adjusted to maintain the min. edge distance to mortar joints, additional concrete anchors may be required to ensure the "MAX. ON CENTER" dimension are not exceeded.
  - Concrete anchor table:

ANCHOR TYPE	ANCHOR SIZE	MIN. EMBEDMENT	MIN. CLEARANCE TO MASONRY EDGE	MIN. CLEARANCE TO ADJACENT ANCHOR
ITW TAPCON®	3/16"	1-1/4"	3"	2-1/2"
	1/4"	1-1/4"	2-1/2"	4"
	5/16" (XL)	1-3/4"	2-1/2"	5"
ELCO ULTRACON®	1/4"	1-1/4"	2-1/2"	4"
	5/16"	1-3/4"	2-1/2"	5"



Documents Prepared By:  
**RW** BUILDING CONSULTANTS, INC.  
P.O. Box 230 Valrico FL 33595  
Phone No.: 813.659.9197  
Florida Board of Professional Engineers  
Certificate of Authorization No. 9813  
*FL 12. 30-13*  
Lyndon F. Schmidt, P.E. No. 43409

PRODUCT: CLARK HALL IRON DOORS  
PART OR ASSEMBLY: FRAME ANCHORING

NO.	DATE	BY

DATE: 10/30/13  
SCALE: N.T.S.  
DWG. BY: JK  
CHK. BY: LFS  
DRAWING NO.: FL-16663.11  
SHEET 10 OF 12



